


Wisconsin Digital Learning Collaborative (WDLC)



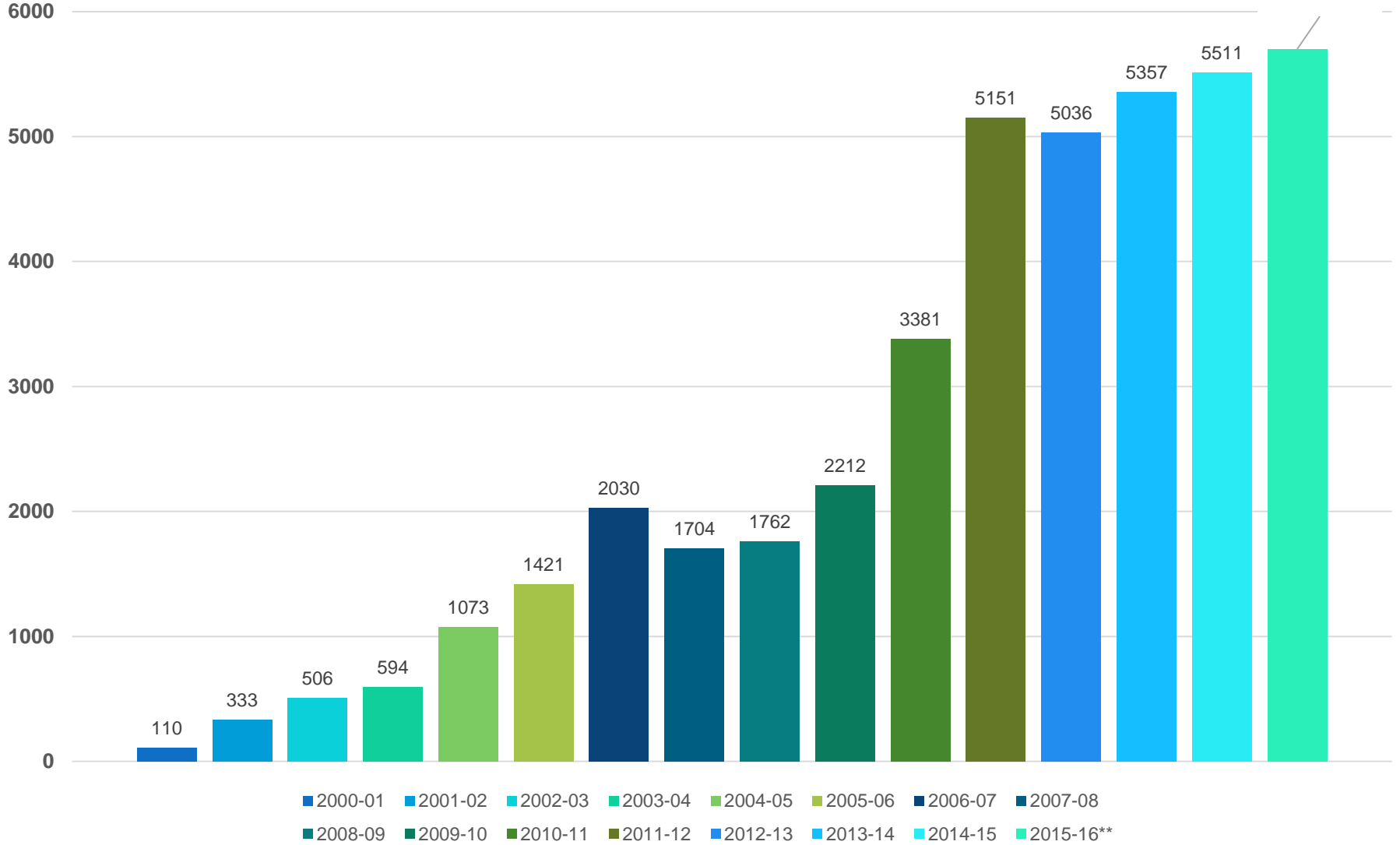
<http://dpi.wi.gov/imt/digital-learning/collaborative>

The background of the slide is a dense, scattered field of grey, three-dimensional characters. These characters include both numbers (0-9) and letters (A-Z), rendered in a sans-serif font. They are scattered across the entire frame, creating a textured, data-like appearance. The lighting is soft, giving the characters a slight shadow and a metallic or plastic-like texture.

WVS (WDLC) Numbers

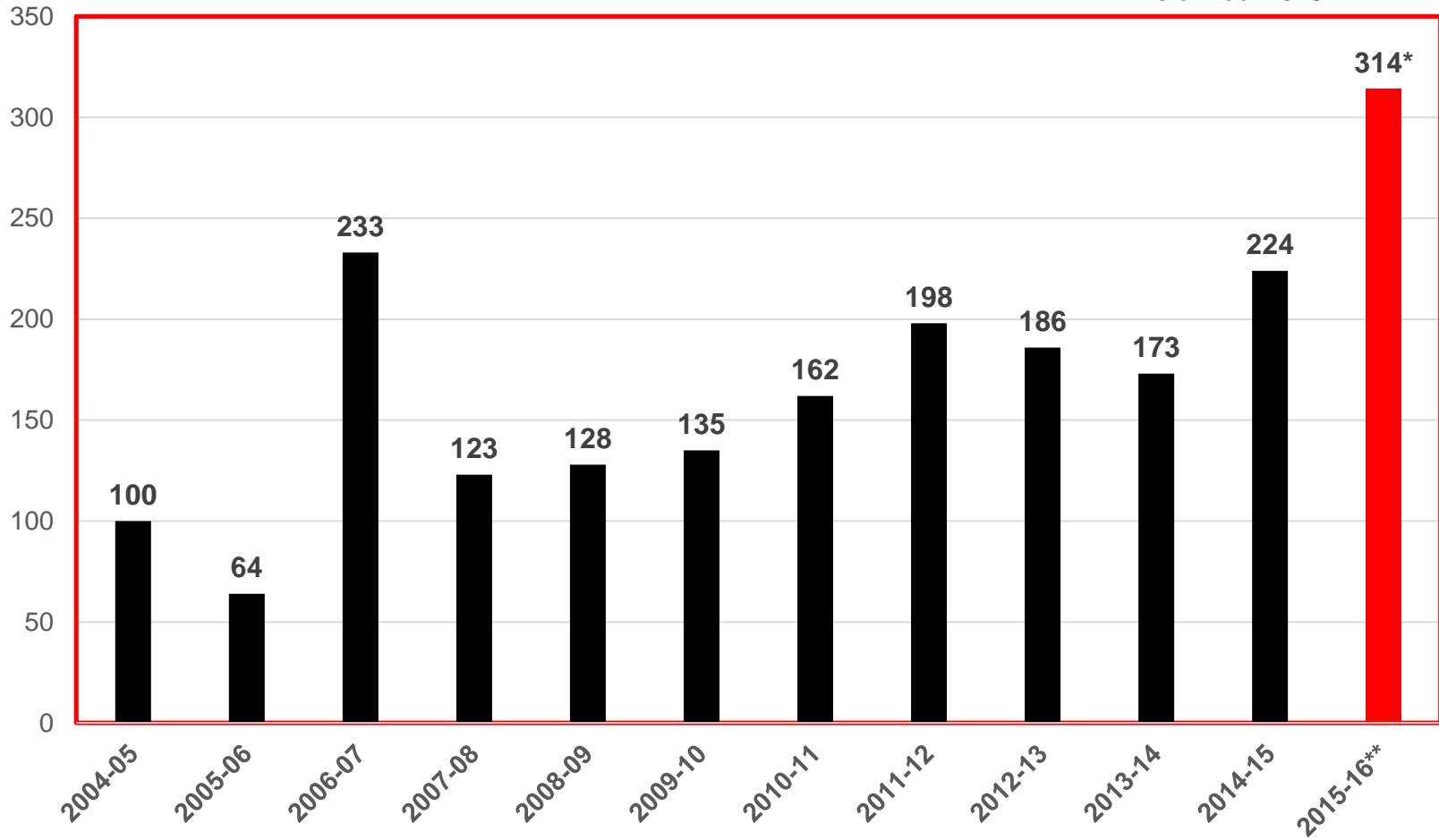
WVS Enrollments

As of Feb. 2016 **5700**



WVS Enrollments from CESA 9 Schools

As of Feb. 2016



WDLC Project Buckets

Digital
Content

\$750,000

Instructional
and
Administrative
Software

\$200,000

Support and
Maintenance

\$225,000

Administrative
Costs

\$475,000

System
Integration,
District Pilots

\$200,000

CESA
Administrative
Fee (5%)
\$92,500

Wisconsin Digital Learning Collaborative (WDLC)

The collaborative partnership and the funding resources has allowed us to **increase equitable access to quality digital learning opportunities** and **provide lower costs and efficiency for schools.**

WDLC Current State Initiatives

- WDLC added more than **20 new, or newly, returning districts** in Fall 2015-16
- WDLC projects a **60% reduction in curriculum licensing costs** which are directly passed on to partnering districts
- WDLC supplemental **cost per semester course decreased 9%** for 2015-16
- WDLC is seeing close to a **16-20% increase in enrollments** over last year
- WDLC supplemental online options for summer school **increased 49% in 2015. Anticipating an increase for 2016 with the new funding mechanism for summer online courses.** <http://dpi.wi.gov/sfs/children/summer-school>

WDLC Current State Initiatives

- WDLC added **20** new online courses, **8** are Georgia State Dept. of Ed's Georgia Virtual School courses where Wisconsin subject matter experts built the assessments
- WDLC participation on the DPI e-Learning and Competency Based Education workgroups
- **Three** new dual enrollment courses with North Central Technical College and Mid State Technical College
- WDLC sponsored and facilitated *Planning and Administering Digital Initiatives* - **CESA 9 (February 9th)** district admin and team leaders from the following districts: **Marshfield, Antigo, Edgar, Northland Pines, Rib Lake, Three Lakes**

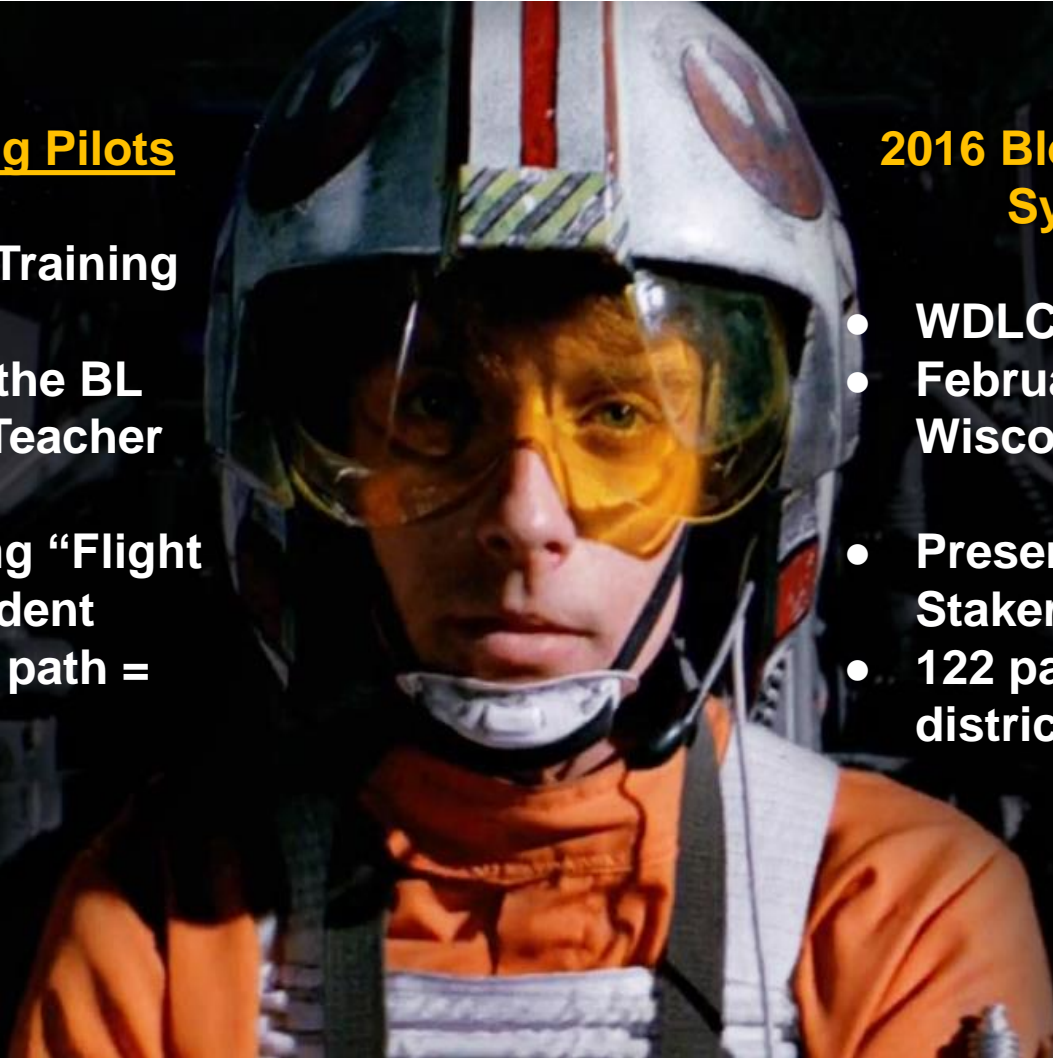
Wisconsin Digital Learning Collaborative

Blended Learning Pilots

- BL Teacher Training
- Content for the BL Classroom Teacher
- Personalizing “Flight Plans” - Student pace, place, path = choice

2016 Blended Learning Symposium

- WDLC Sponsored
- February 23, 2016
Wisconsin Dells
- Presenter: Heather Staker
- 122 participants, 49 districts/organizations

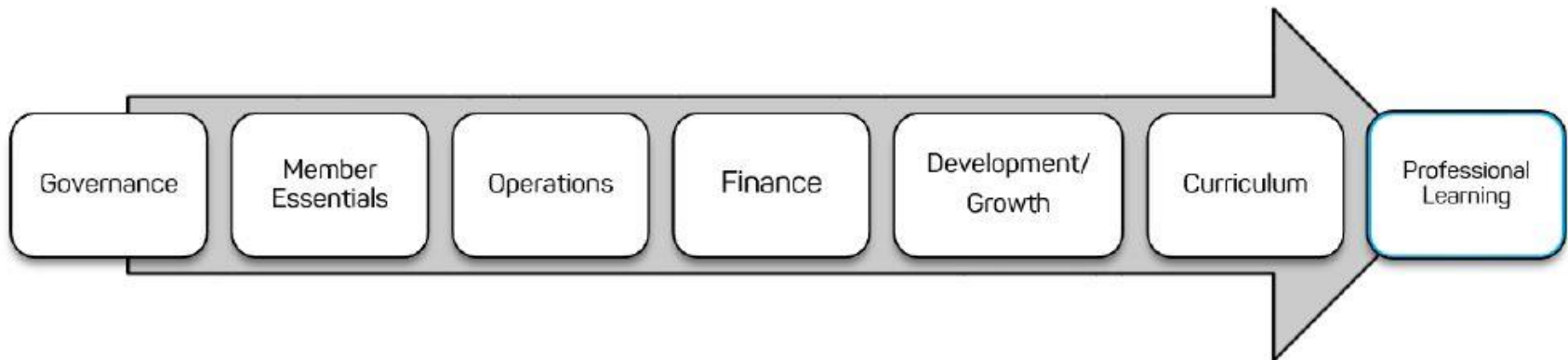


WDLC Vision

- **Evergreen Education (Consulting Group)**
 - Neutral facilitator
 - Surface national landscape applied to Wisconsin strategy
 - Provide advice and strategic ideas to consider



Strategic Focus Areas:



Virtual Education Research Alliance (VERA)

- Research project with the Regional Education Laboratory (REL) and American Research Institute (AIR)
- Two states involved: Wisconsin and Iowa
- Two federally funded projects are **published!**
 - **Wisconsin Online Learning Survey**
 - **Online Teacher Professional Development Models**
- Current projects: **Student Engagement** and **Student Orientation**



Any

Questions